



BMS-L106-BH4



BMS-L106-AUX



BMS-L106-Z10



TECHNICAL DATA

Input Voltage: DC 12V
 Input Current: 50mA Max
 Input Power: 0.6W
 Output Voltage: DC 10V
 Output Current: 10mA Max
 Output Power: 0.1W
 Dimming: Class 2, 0-10V DC 10mA Max
 Sinking Current: 10mA Max

Bluetooth Transmit: 100ft Max
 Radio Frequency: 2.4GHz ± 75MHz
 Bluetooth Version: 5.0
 Housing Material: UL 94-5VA,
 Indoor / Outdoor Use
 Detection Range: 40-80ft
 Mounting Height: 20-40ft
 Operating Temperature: -30°C to 55°C,
 -22°F to 131°F
 Storage Temperature: -30°C to 85°C,
 -22°F to 185°F
 IP Rating: IP40
 Color: White,Black,Brown

Comply to UL8750, UL1376, RoHS
 Compliant Standard Interfaces:
 Zhaga book 18
 Safety: cULus Listed LED Controller

DESCRIPTIONS

The BMS-L106 series are designed for Luminaire Level Lighting Control with integrated daylight harvesting and PIR motion sensors. SC01-AUX provide the sensor port for BMS-L106-AUX, which is designed for pre-installation in linear high bay or UFO high bay luminaires. BMS-L106 is a low voltage high bay sensor equipped with the algorithm to maximize detection for high bay applications up to 40 ft without false triggers.

FEATURES

- Plug and Play with Sensor Port Pre-installed
- Bluetooth Network Technology
- Design for High Bay applications
- Analog Sensor Built-in
- Replaceable lens options
- 12V DC input
- Daylight Harvesting available
- Cold temperature rated

ORDERING INFORMATION

Model No.	Description
BMS-L106-PIR-DC-BLE-KL-BH4	Fixture Integrated Network PIR&Daylight Harvesting Sensor- BH4 Base
BMS-L106-PIR-DC-BLE-KL-AUX	Fixture Integrated Network PIR&Daylight Harvesting Sensor- 3.5mm Audio Jack Base
BMS-L106-PIR-DC-BLE-KL-Z10	Fixture Integrated Network PIR&Daylight Harvesting Sensor - Zhaga Base

Mating Receptacles (Not Included in the product package)



BH4



SC01-AUX



Zhaga-Z10

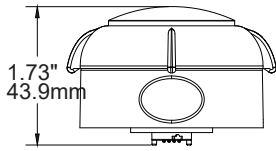


SC03-AUX

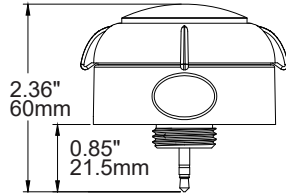
PHYSICAL DIMENSIONS

Unit:inch/mm

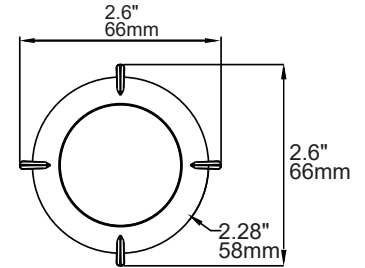
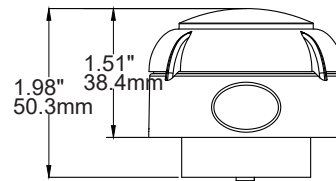
BMS-L106-BH4



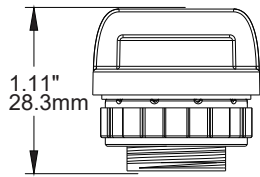
BMS-L106-AUX



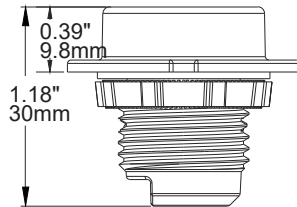
BMS-L106-Z10



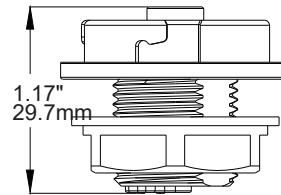
BH4



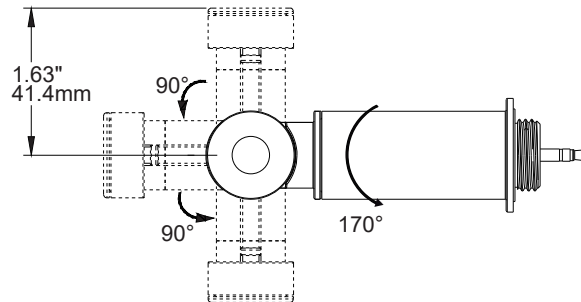
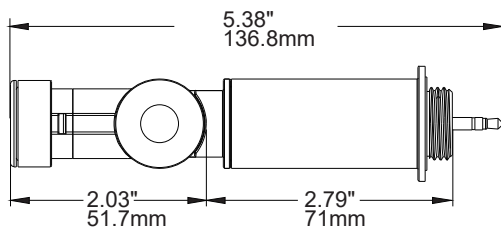
SC01-AUX



Zhaga-Z10



SC03-AUX

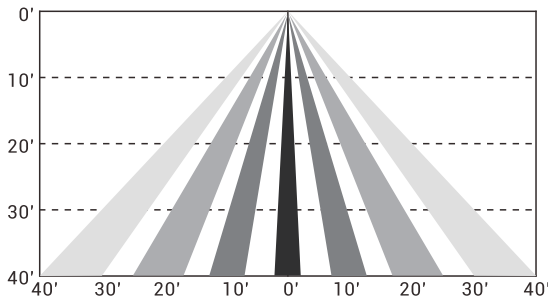


DETECTION AREA

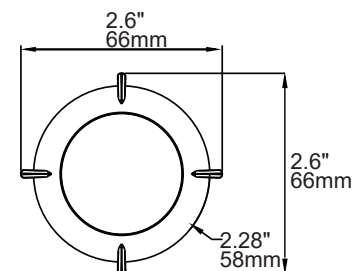
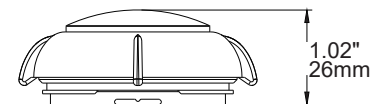
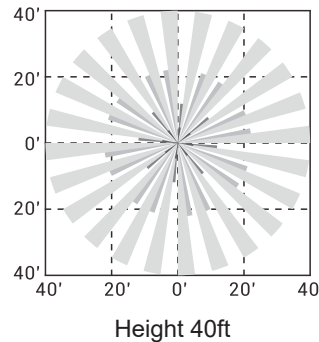
Unit:inch/mm

LS03-HB1-2-WH

Side View

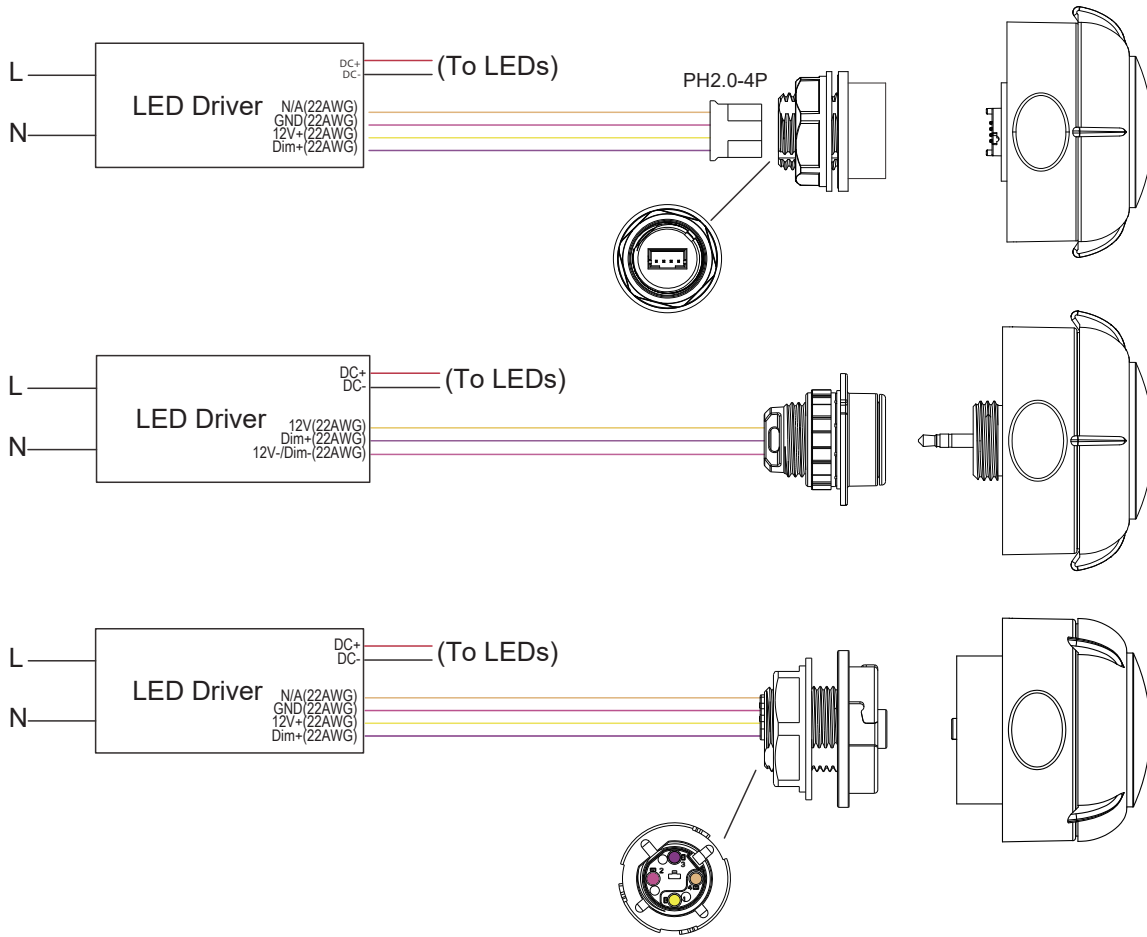


Top View



WIRING DIAGRAM

Ref#: 20250226



1/2 inch US standard knockout

AMERICAN INCH PRODUCTS		
Size	T.P.I	Major Dia.
	inch	inch
R1/2	14	0.825

WARRANTY

Five year limited warranty.

Specifications subject to change without notice.